



# ***Student Success after Transfer from College to Lakehead University***

**Office of Institutional Analysis  
Lakehead University**

# Intro



## Purpose:

1. Exploratory study to determine attributes of and success rates of Lakehead University's college transfer students
2. Test potential accountability measures for credit transfer students

# About transfer at Lakehead



- Between 500 and 600 college transfer students enter Lakehead each year which is about 1/3 of our incoming student population
- Lakehead has a 2% share of the overall enrollment in the Ontario university system, but a 6% share of the credit transfer activity

# Methods



- Examined success of college transfer students entering Lakehead from 2000/01 – 2010/11.
- Used data from Lakehead's student information system.
- Last institution attended and basis for admission was a college within Canada
- Used modifications of traditional success measures retention rate, graduation rate and average grade.
- Compared success of three types of transfer students (block, advanced standing, other college) to direct entry (from high school) students.

# Challenges and Limitations



- Data not originally collected for this purpose
  - Data definitions changed over the period of study, due to evolution of data collection / student information system
  - Students with complex pathways prior to becoming college transfer students at Lakehead were not easily captured
- Part-time students were not included in the analysis

# Findings



Page 1 of 10

# Profile of Credit Transfer at Lakehead

- 3 types of pathway into Lakehead
  - Block transfer to high affinity programs (40%)
  - Advanced standing (0.5 or more credits) (24%)
  - Other College (no credits granted but admission based on college studies) (36%)

# Profile of Credit Transfer at Lakehead

- Top programs by type of credit transfer 2005 - 2010

	Block	Advanced Standing	Other College
1 <sup>st</sup>	Engineering (5 disciplines)	Concurrent Education	General Arts and Science
2 <sup>nd</sup>	Business	Social Work	Concurrent Education
3 <sup>rd</sup>	Natural Resources Management	General Arts and Science	Access / Qualifying Programs

- Top 5 sending Colleges

1	Confederation
2	Humber
3	Algonquin
4	Georgian
5	Seneca



# Success Measures



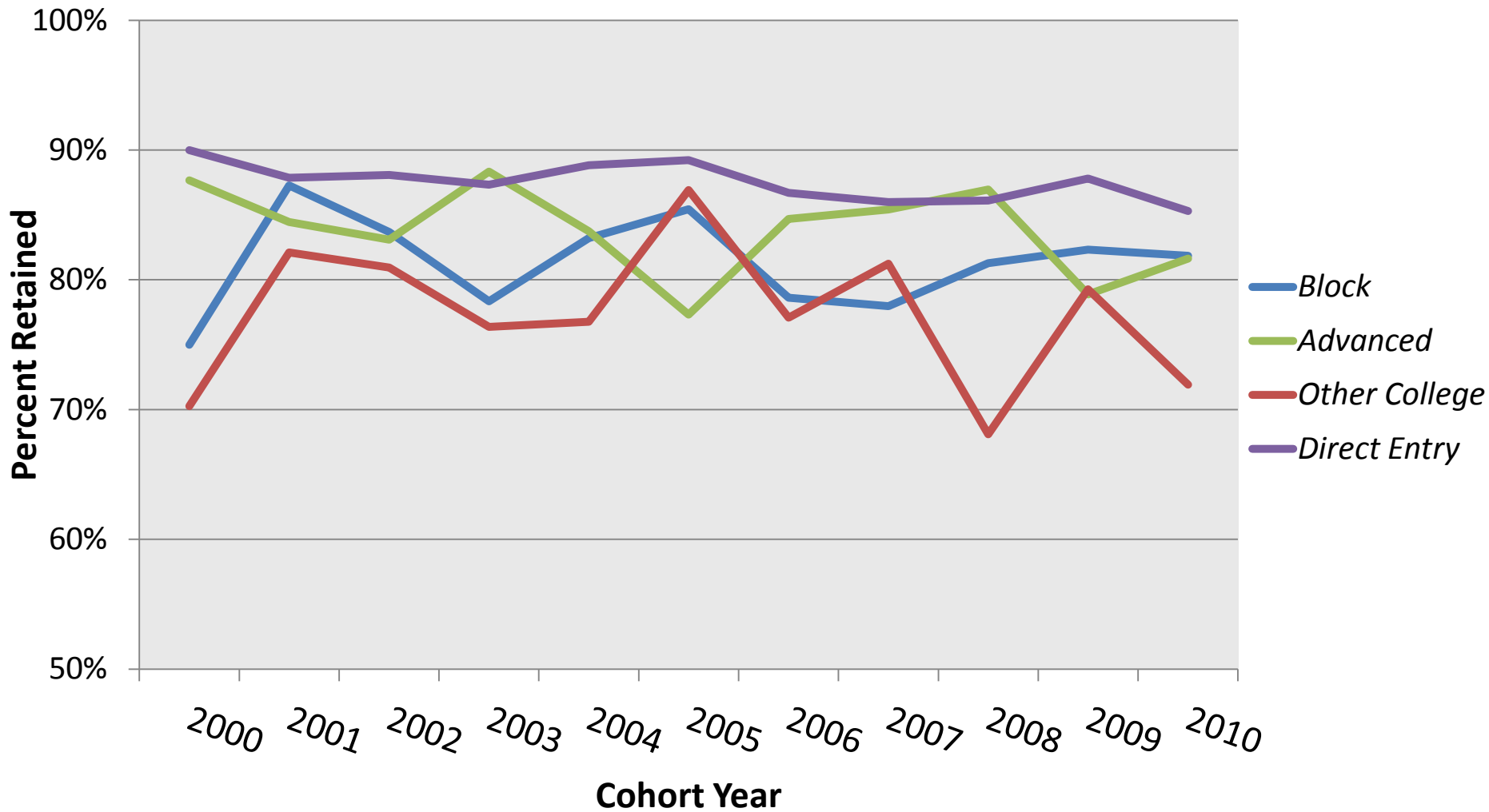
- One Year Retention Rate –fall to fall retention
- One Year Success Rate – retained or graduated
- Graduation Rate – Six year equivalent graduation rate
- Common Entry Year Graduation Rate
- First Term Grade Point Average

www.lakeheadu.ca

# Retention Rate



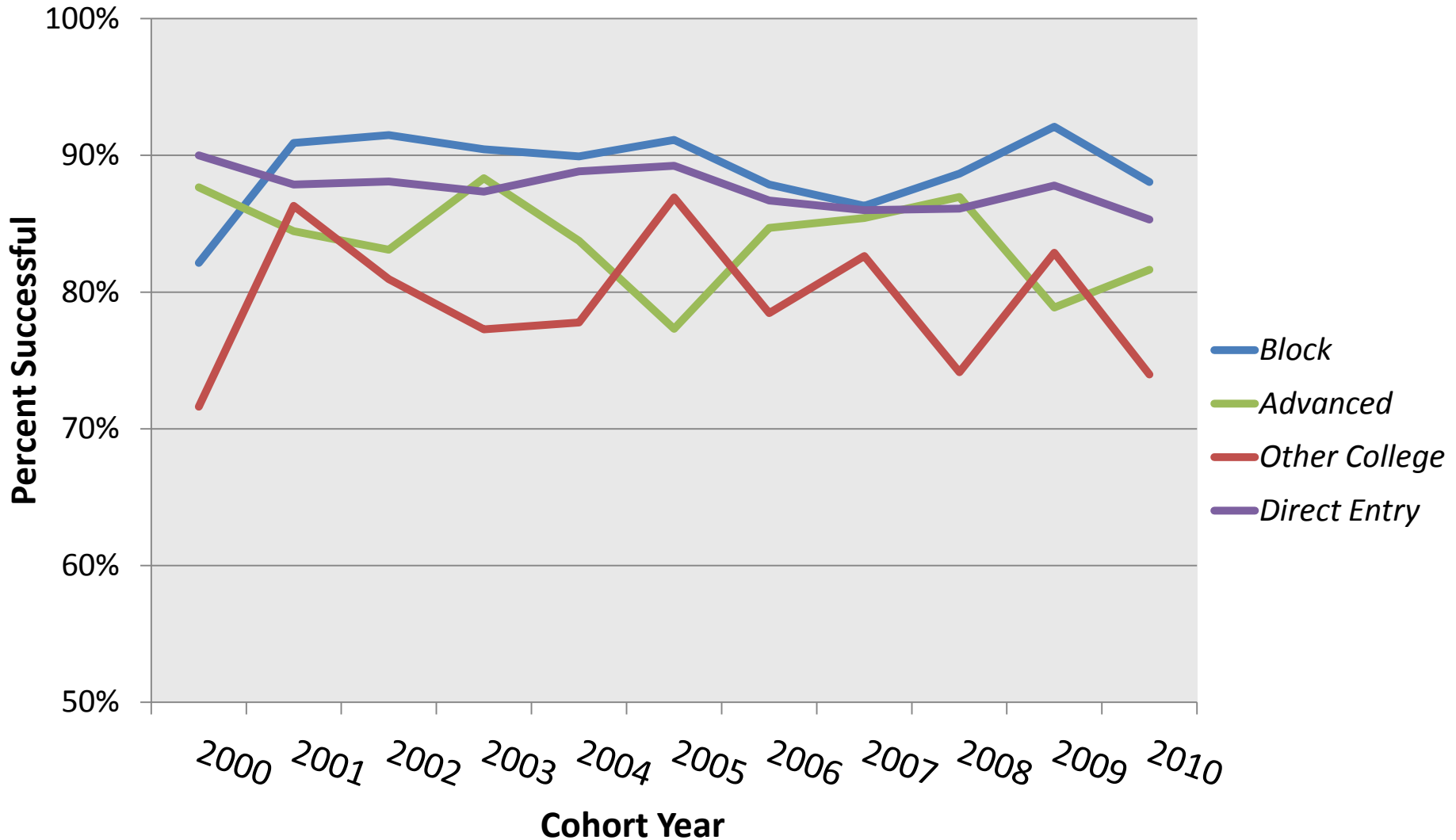
## One-year Retention Rate - Full-Time College Transfer vs. Direct Entry Students at Lakehead University



# Success Rate



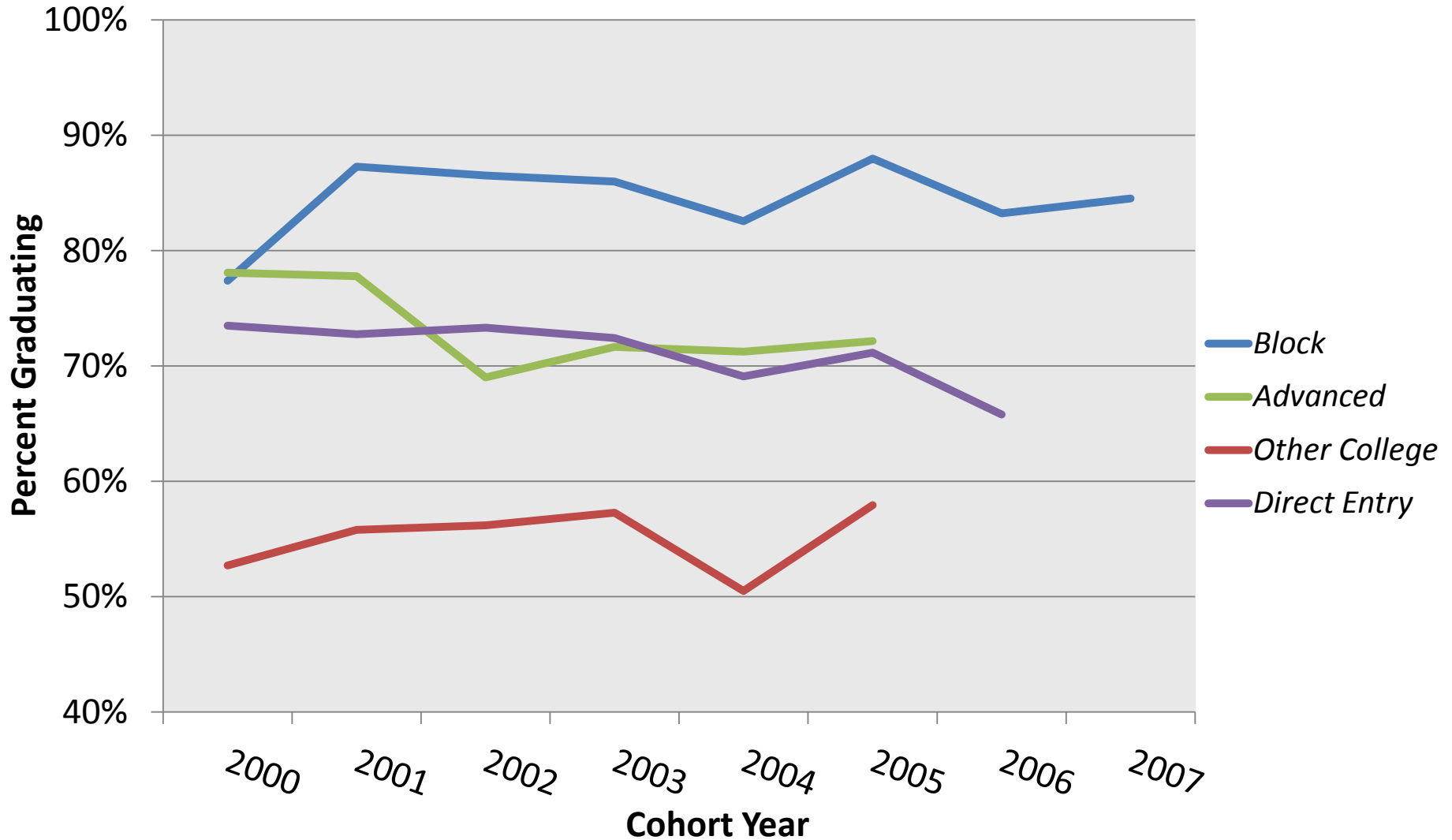
## One-year Success Rate - Full-Time College Transfer versus Direct Entry Students at Lakehead University



# Graduation Rate



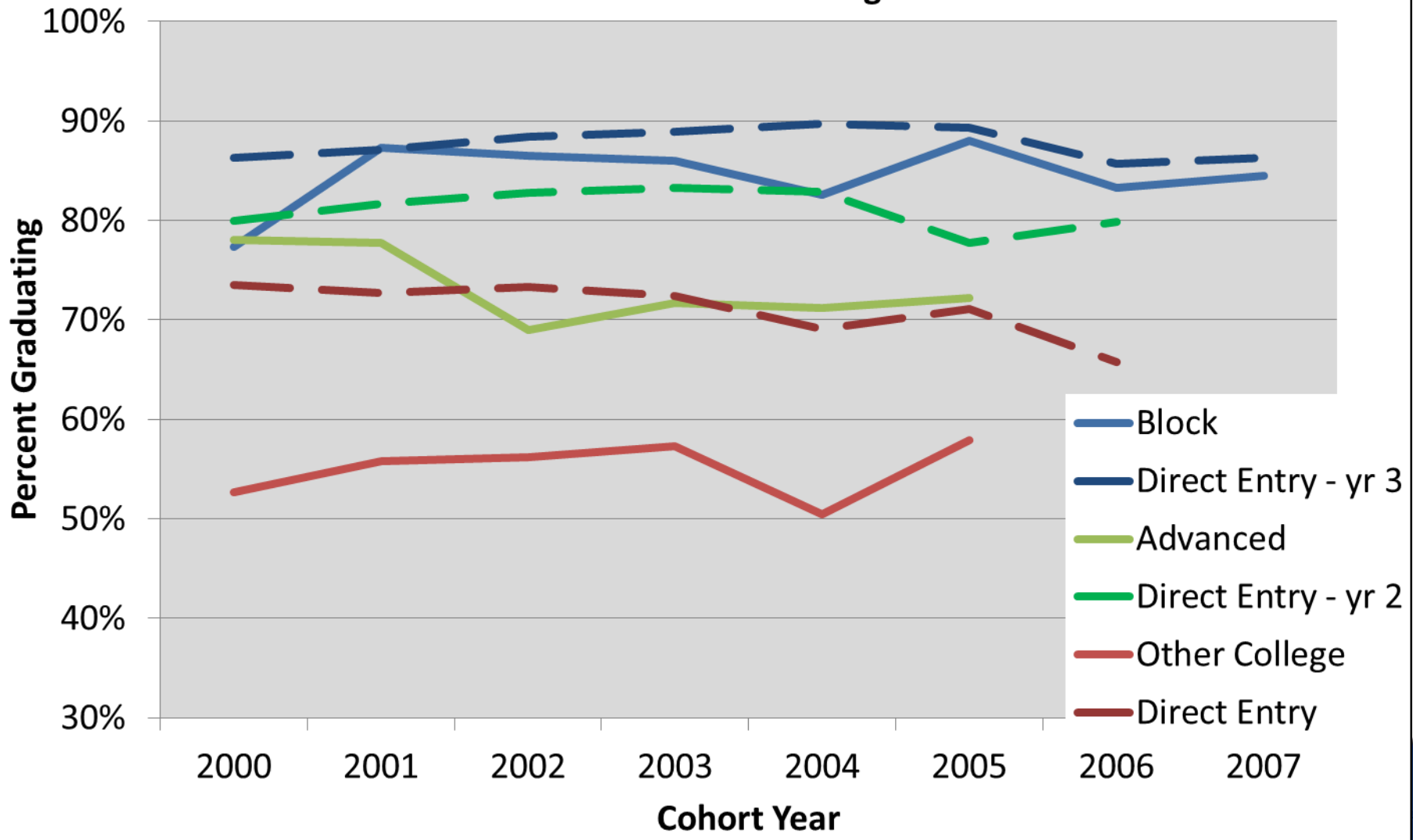
**Six-Year-Equivalent Graduation Rate of Full-Time Students at Lakehead University, by Cohort Year and type of College Transfer**



www.lakeheadu.ca

# Common Entry Year Graduation Rate

Graduation Rates of Full-time College Transfer Students at Lakehead University (by type) Compared to Rates of First-time Full-time Freshmen at a Common Starting Point

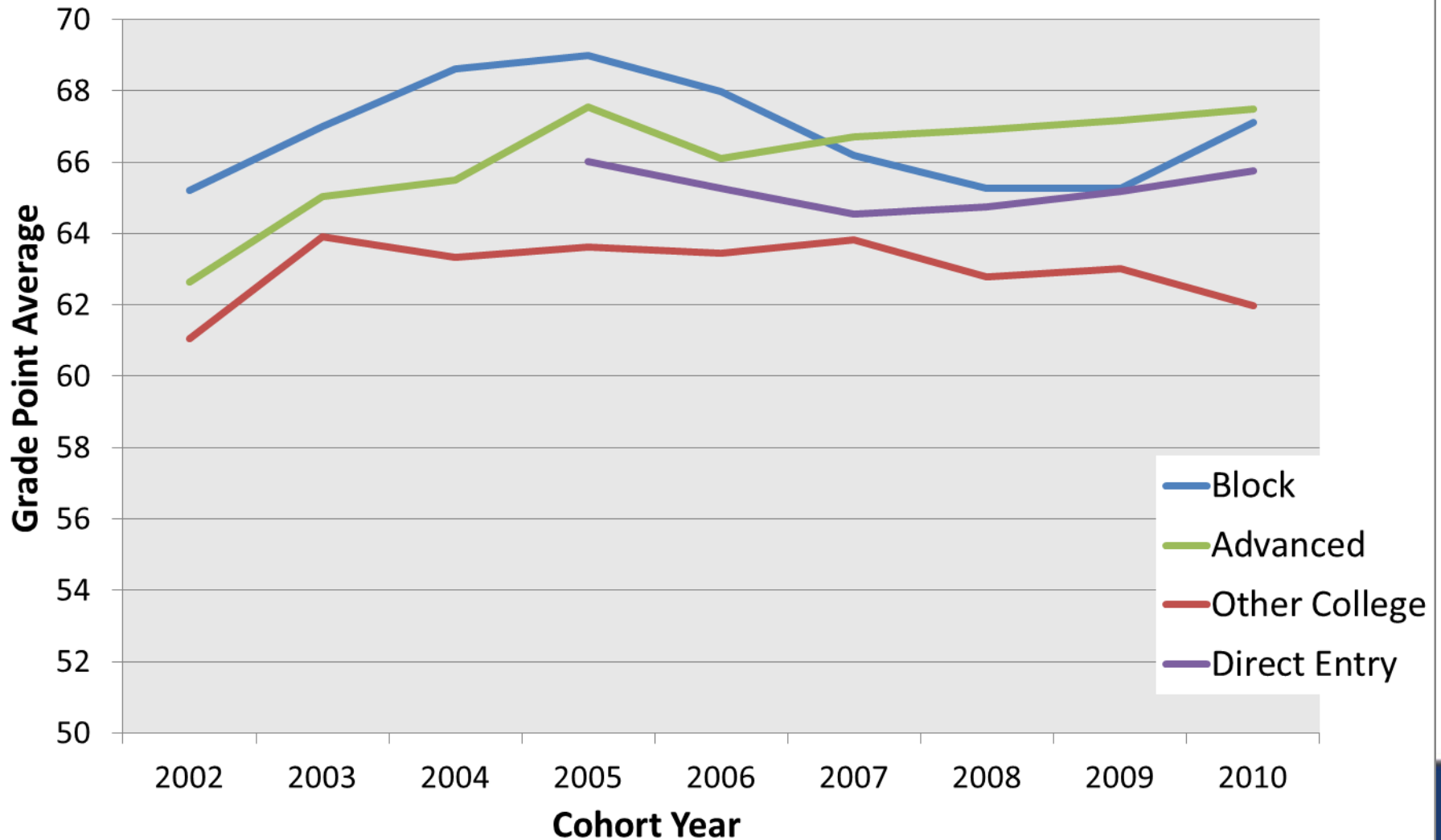


Vertical text on the right edge of the slide, likely a page number or navigation indicator.

# Average Mark



## Three Year Moving Average of First Term GPA for each type of College Transfer (Full-time only)



www.lakeneadu.ca

# Concluding Remarks

- Study shed light on characteristics and success rate of credit transfer students at Lakehead.
- In many aspects, full-time college transfer students at Lakehead are as successful as their direct entry counterparts
- Of the 3 types of college transfer, students entering block transfer programs are most successful, followed by advanced standing and other college
- Future research needs to be conducted to shed light on the causes of the differences in success rates between the types of college transfer programs

# Questions



Further questions about this study may be directed to:

Sarah Browne  
Senior Research Analyst  
Office of Institutional Analysis  
Lakehead University  
[sbrowne@lakeheadu.ca](mailto:sbrowne@lakeheadu.ca)